

Caribou® Chill Wear

User Information

EN342:2017 Protective Clothing - Ensembles and garments for protection against cold

Thermal resistance and air permeability results are based on wearing an ensemble of an upper (jacket/coat) and a lower (trouser/salopettes) garment, or a coverall. **Warning** - it is important that upper and lower body garments are worn together to achieve these ratings and give full protection to the wearer.

EN342:2017



Icler - in $\text{m}^2 \cdot \text{K/W}$

Underwear - (B) indicates tested with standard underwear

AP - air permeability class

WP - Water penetration (optional) - X indicates not tested

Thermal resistance may decrease after washing.

Protection against cold may also depend on such factors as: other clothing being worn, windchill factors, wearer activity, wearer fitness and nutrition. The wearing of other products, such as gloves, headwear, boots will further protect the user from the cold.

Please refer to the following table for comfortable exposure times at different levels of activity, but bear in mind this will further depend on factors such as additional clothing worn, wearer fitness/nutrition, and wind chill (air velocity). The values are only valid with an even distribution of insulation on the body and with adequate hand-, foot- and head-wear.

Insulation Icler m².k/W	Wearer moving activity							
	light 115 W/m²				medium 170 W/m²			
	Air velocity							
	0.4 m/s		3.0 m/s		0.4m/s		3.0 m/s	
	8h	1h	8h	1h	8h	1h	8h	1h
0.265	3	-12	9	-3	-12	-28	-2	-16
0.310	-2	-18	6	-8	-18	-36	-7	-22
0.390	-9	-28	0	-16	-29	-49	-16	-33
0.470	-17	-38	-6	-24	-40	-60	-24	-43
0.540	-24	-45	-11	-30	-49	-71	-32	-52
0.620	-31	-55	-17	-38	-60	-84	-40	-61



This garment complies with the requirements of EU Regulation 2016/425 and the above standard - for details of conformance please visit:

<http://www.goldfreeze.com/company/quality-systems/>

Goldfreeze: results for ensembles:						
Ensemble	Upper garment - 1	Upper garment - 2	Lower Garment	Icler $\text{m}^2 \cdot \text{K/W}$	AP Class	
1	3915150 Caribou® Chill	3965150 Caribou® Chill Gilet	3935150 Caribou® Chill Trousers	0.358	3	
2	3911150 Caribou® Chill Bomber Jacket	3965150 Caribou® Chill Gilet	3935150 Caribou® Chill Trousers	0.355	3	
3	5005020 Caribou® Deep Fleece Jacket	3965150 Caribou® Chill Gilet	3935150 Caribou® Chill Trousers	0.359	1	

Improper use

Dirty clothing may lead to a reduction in protection and if at any time this garment is un-recoverably damaged, soiled or contaminated, it should be replaced immediately. Dispose of this garment appropriately at the end of its life - textiles may be recycled.

This garment should be worn fastened at all times to provide the correct level of protection as stated above.

Storage: Do not store in direct sunlight. If the garment becomes damp or wet, allow to dry fully at room temperature before storing.

Aftercare



Max. 5x wash cycles.

Do not use biological wash powders.

Hand wash or machine wash 40°C reduced cycle.

Do not wring.

Do not use bleach.

Do not iron.

Do not dry clean.

Tumble dry at reduced setting.

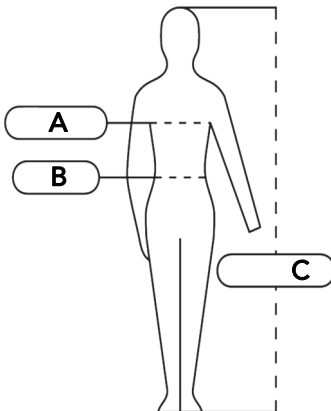
NB Resultant effective thermal insulation value (Icler), air permeability and dimensional stability scores are representative of garments after having been washed and allowed to air dry 5 times according to ISO 6330:2012 4N

No liability will be accepted for garments where care labels have been ignored, defaced or removed.

The stated maximum number of wash cycles is not the only factor relating to the lifetime of the garment.

The lifetime of the garment will also be dependent on usage, care and storage.

Available sizes and selection



We offer our Caribou® Chill Wear in sizes S - XXL (XS, 3XL & 4XL available in selected styles - check our catalogue or website for further information.

Size		XS	S	M	L	XL	XXL	3XL	4XL
A	Chest	80-88	88-96	96-104	104-112	112-120	120-128	128-136	136-144
B	Waist	68-76	76-84	84-92	92-104	104-112	112-124	124-132	132-140
C	Height	164-176	170-176	176-182	182-188	182-188	182-194	182-194	182-194

*Fit is according to the following size chart:
All sizes in cms.*

For further information please contact:

Goldfreeze Ltd
23 Sleaford Business Park
East Road
Sleaford
Lincolnshire UK
NG34 7EQ
P: 0845 643 4753
F: 0845 643 4754
E: sales@goldfreeze.co.uk
W: www.goldfreeze.com

Notified body:

EU type examination carried out by:

SATRA Technology Europe Ltd.
Bracetown Business Park
Clonee
D15 YN2P
Ireland

Notified Body No. 2777